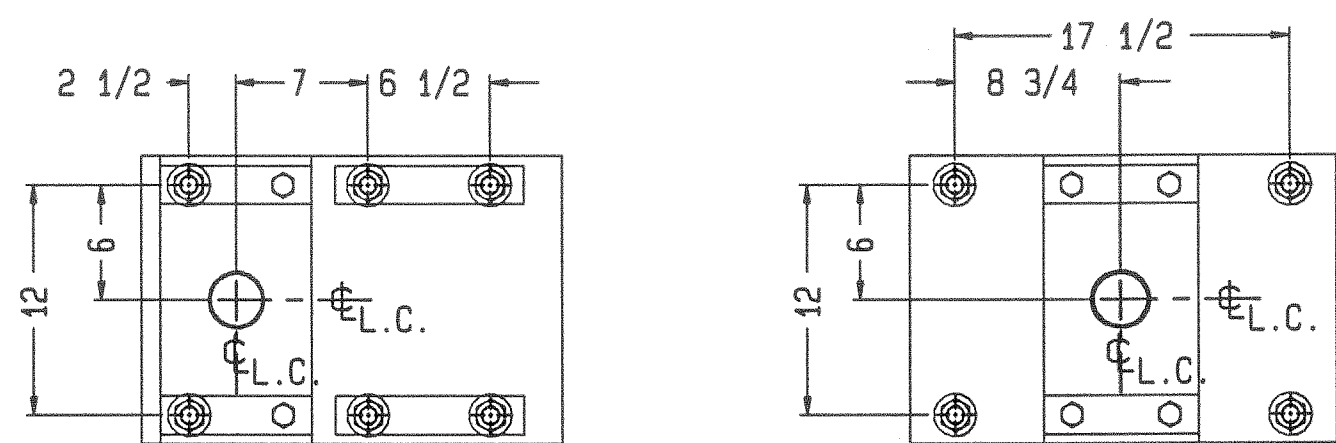


- NOTES:
- 1) PIT DESIGN SPECIFICATIONS:
THE PIT DESIGN IS BASED ON SUPERIMPOSED SCALE LOADS, NORMAL TRUCK SURCHARGE THAT GENERATES BEARING PRESSURE OF 3000 PSF. IF THE SOIL DOES NOT HAVE A BEARING PRESSURE OF AT LEAST 4000 PSF, AND ITS CAPACITY CANNOT BE INCREASED BY DRAINAGE, STABILIZATION, OR OTHER MEANS, PILE FOUNDATIONS SHALL BE PROVIDED (BY OTHERS) PER A.A.R. (2.22.19).
 - 2) UNUSUAL CONDITIONS:
FOR UNUSUAL SOIL OR LOADING CONDITIONS, ARCHITECTURAL REQUIREMENTS THIS DESIGN MUST BE ALTERED ACCORDINGLY. IN ALL CASES, THE PIT BOTTOM MUST BE BELOW THE FROST LINE.
 - 3) DIMENSIONAL TOLERANCE:
DIMENSIONS TO TOP OF PIERS FROM TOP OF CURB ANGLES MUST BE HELD +/- 1/8". TOP OF CURB ANGLES MUST BE LEVEL.
 - 4) CONCRETE AND STEEL SPECIFICATIONS:
USE 4000 PSI STRENGTH CONCRETE AT 28-DAY AGE. IF SUBJECT TO SEVERE WEATHER CONDITIONS, USE AIR-ENTRAINING AGENT. ALL REINFORCING STEEL TO BE DEFORMED BARS A.S.T.M. A-615 GRADE 60. ALL CONCRETE AND REINFORCING STEEL TO BE PLACED ACCORDING TO THE BEST PRACTICE AS PRESCRIBED BY THE LATEST AREA MANUAL CHAPTER.
 - 5) GENERAL INFORMATION:
EXCAVATION, FOUNDATION FORMS, REINFORCING STEEL, CONCRETE, AND CURB ANGLES (A.A.R. TB301571) TO BE FURNISHED BY CONTRACTOR.
 - 6) APPROACHES:
APPROACH AT EACH END OF SCALE SHOULD BE STRAIGHT, IN THE SAME PLANE AS PLATFORM, AND IF PRACTICABLE, 25 FT. MINIMUM LENGTH, OR COMPLY WITH STATE WEIGHTS AND MEASURES REGULATIONS.
 - 7) CONSTRUCTION MATERIAL QUANTITIES:
CONCRETE 124 CUBIC YARDS
REINFORCING STEEL 11,943 POUNDS



RECEIVER/BUMPER PLATE

ANCHOR BOLT LOCATION DIMENSIONS ARE FOR REFERENCE ONLY. USE BASEPLATES TO ESTABLISH ACTUAL POSITION OF ANCHORS.

RECEIVER PLATE

ANCHOR BOLT LOCATION DIMENSIONS ARE FOR REFERENCE ONLY. USE BASEPLATES TO ESTABLISH ACTUAL POSITION OF ANCHORS.

REINFORCING STEEL SCHEDULE (ASTM A-615 GRADE 60) BY OTHERS						
COLD FORM BARS TO INSIDE DIMENSIONS						
SYM	SIZE	QTY	LOCATION	TOT. LGTH.	A	B
ST1	#6	137	UPPER FLR LATERAL	11'-3"		
ST2	#4	61	LOWER FLR LATERAL	7'-6"		
ST3	#6	20	UPPER FLR LONG.	34'-4"		
ST4	#4	60	LOWER FLR/SIDE WALL LONG.	33'-8"		
ST5	#8	60	FLOOR UNDER CENTER PIERS	6'-0"		
ST6	#4	98	SIDE WALL IF VERT.	6'-2"		
ST7	#6	98	SIDE WALL OF VERT.	6'-2"		
ST8	#6	24	CENTER PIERS	5'-0"		
ST9	#6	8	UPPER END WALL HORIZ.	3'-1"		
ST10	#4	16	UPPER END WALL DIAG.	2'-8"		
L1	#6	162	SIDE WALL OF--FLR	6'-4"	3'-4"	3'-0"
L2	#6	16	END WALL IF--FLR	4'-0"	0'-9"	3'-3"
L3	#8	30	END WALL OF--FLR	9'-4"	3'-0"	6'-4"
L4	#6	8	END WALL--SIDE WALL	4'-0"	2'-0"	2'-0"
U1	#8	20	END WALL--SIDE WALLS	15'-3"	11'-3"	2'-0"
U2	#6	24	FLOOR--PIER--FLOOR	12'-5"	3'-3"	3'-7"
U3	#6	16	SIDE WALL--PIER--SIDE WALL	14'-5"	3'-3"	4'-7"
Z1	#6	12	END WALL--PIER--FLOOR	8'-10"	3'-3"	3'-7"
Z2	#6	16	SIDE WALL--PIER--FLOOR	9'-5"	4'-7"	2'-10"

TC307716-1 FOUNDATION STEEL (BY METTLER-TOLEDO)			
ITEM	QTY	PART NUMBER	DESCRIPTION
1	8	TN302239	BASE PLATE
2	4	TB200601-2	BASE PLATE
3	12	TB200834	RECEIVER PLATE
4	8	12752400F	CLAMP BAR
5	16	TB200601-4	CLAMP BAR
6	8	TB200601-3	ANGLE
7	16	TN201375	ANGLE
8	8	TC301512-5	ANGLE
9	16	TC300927-26	BENT ANCHOR 1-8 X 2' UNC
10	64	TC300927-25	ANCHOR ROD 1"-8 X 2' UNC
11	290	MZ0901020047	HEX NUT 1"-8 NC
12	162	MZ0901030059	FLAT WASHER 1"
13	32	MZ0901010354	BOLT 3/4-10 X 2-1/4 UNC
14	16	TN302937	CLAMP BAR
15	4	TN203060	RAIL PLATE PIT WALL

REV	CHANGE	BY	DATE	SCALE	1/40
A	CORRECTED HEIGHT ERROR ON PIERS	ELB	4/1/98	DATE	3/30/98
B	NOTE 5 REF'D THE 75X10 ANGLE PRINT TB201374	BTS	08/23/07	DRN	ZL
C	ADJUSTED QUANTITIES FOR FDN STL ITEMS 11, 12	JLB	10/13/09	APPRO	JLB
TITLE 7360, FOUNDATION 60' X 10', WITH 4 FT. UNDER MAIN BEAMS					
UNLESS OTHERWISE SPECIFIED, ALL DIMENSIONS ARE IN INCHES, AND DIMENSIONAL TOLERANCES ARE: FRACTIONAL .XX ±.02 ANGULAR ±.5°					
THIS PRINT IS FURNISHED WITH THE UNDERSTANDING THAT THE ESSENCE THEREOF WILL NOT BE REPRODUCED IN WHOLE OR IN PART WITHOUT WRITTEN AUTHORIZATION OF METTLER-TOLEDO, INC. ALL DESIGNS ARE THE PROPERTY OF METTLER-TOLEDO, INC. AND WILL BE PROTECTED BY PATENTS.					
TC307716					REV C